

The member magazine for Kent Wildlife Trust

Wilder Kent

Winter 2024

PAGES 14 & 15

Wildlife Photographer of the Year

Find out who was crowned
the winner of this year's
photography competition.

APPEAL

Support a chough chick this Christmas

The next generation of choughs
need your support - and for a
limited time, triple your donation
for free!

A wilder 2024

Your special year review
edition of Wilder Kent



Kent
Wildlife Trust

GIVE WILDLIFE A GIFT THIS SEASON



Looking for the perfect Christmas gift? Give something truly meaningful by shopping with us!

- Adoption packs for a range of beloved Kent species
- Experience vouchers for our popular Wilder Kent Safaris
- Dedicate a Legacy Landscapes plot to protect nature in a loved ones' name
- and much more!



Find out more about Legacy Landscapes at kwtg.uk/legacy-landscapes-winter



Check out our range at kwtg.uk/shop-winter or scan the QR code

With each purchase, you'll also be giving nature a gift this season by directly supporting crucial conservation work right here in Kent.

Welcome

to the **Winter** edition of Wilder Kent



We achieved some extraordinary successes in 2024, including the purchase of Furnace Farm right at the beginning of the year; the acquisition of the extension to our Polhill reserve off the back of a successful summer appeal; the first breeding attempt of reintroduced red-billed choughs in Kent for over 200 years; the installation of our first two bison bridges in the Blean; and the successful campaign to force the government to commit to cleaning up the industrial-scale rubbish dumping at Hoad's Wood.

It is this last example that really shows the grit and determination of our team at Kent Wildlife Trust, who – working with local campaigners – forced this outrageously overlooked criminal activity onto the desk of the Secretary of State to get appropriate action.

This type of activity spans multiple departments at the Trust. It is only possible through your support, which is why we're launching our winter Chough Appeal. 2025 will mark the third year of chough releases to the wild, but this will only be possible if we raise vital funds needed to support our next cohort of chough chicks this winter. We are closer than ever to a self-sustaining population of red-billed choughs in our skies, and we can't stop now.

You'll notice that this edition of Wilder Kent is smaller than previous editions – rest assured, we're focused on making every page as impactful as possible. We are constantly reassessing what we spend on different parts of the business and are always trying to prioritise on-the-ground implementation given the tough economic times that we all continue to face. We have therefore pared back the magazine to focus more firmly on Kent action – although we will continue to share news with our sister Trusts when their activities mesh with our own.

Now we have reached the mid-point of this decade, and our Wilder Kent 2030 strategy. We have been reflecting on how much more we want – and need – to achieve in the next five years, and how we can increase our chances of doing so. This comes off the back of looking at our impact over the last five years – something that is being turned into an impact review which will be a key feature in next year's magazines.

As we look ahead to the next five years, your continued support is more vital than ever. Thank you, as always, for continuing to back us as members. 🍷

Evan Bowen-Jones

Evan Bowen-Jones

Chief Executive of Kent Wildlife Trust | Follow me [X](#) [@EcoLlogik](#)

Kent Wildlife Trust is the leading conservation charity for the county of Kent.

Wildlife is in crisis. The natural world isn't just something for us to enjoy; it sustains us. The decline of nature puts our very survival and prosperity under threat. It doesn't have to be like this.

Our vision is for a better, wilder future. We engage with politicians, business leaders, landowners, communities and people so that we can all work together to protect wildlife.

The **Wilder Kent** magazine team



Editor
Mollie Amor



Designer
Katy McCarten

With special thanks to our subeditor Charlie Lewis and our article authors.

CONTACT US

Email us
comms@kentwildlife.org.uk

Speak to us
01622 662012

Find us online
kentwildlifetrust.org.uk

Write or visit
Tyland Barn, Sandling Lane, Maidstone, Kent, ME14 3BD

Let's be **wilder** together

Follow us on social media for updates and to share nature photos and your thoughts with us!

JUST SEARCH FOR
Kent Wildlife Trust



Charity no. 239992. Company no. 633098. Registered at the above address.

Contents

6 Our marvellous members

14 Your Wildlife
Photographer of the Year 2024

16 New ways to give

18 Events guide

8

GOAL 1 We defend and restore

Explore our big wins for conservation this year, from our flagship projects to on-the-ground conservation work across our reserves.

10

GOAL 2 We inspire and collaborate

From our volunteers and corporate partners to farmers and local community groups, we're engaging more people than ever to build a Wilder Kent.

12

GOAL 3 We strengthen and grow

Find out what Wilder Carbon and our Adonis Blue Environmental Consultants have achieved in 2024, and how we have strengthened our systems to reduce our operational carbon emissions.

PAGE 17

Legacy Landscapes

Celebrate, remember or dedicate a wild space near you.

More from...
Kent Wildlife
Trust



We want to hear from you!

Share your favourite moments as a Kent Wildlife Trust member or tell us what you've loved about nature this year. Whether it's a wildlife sighting, a favourite event or a memorable outdoor adventure, send us your stories!

GET IN TOUCH

comms@kentwildlife.org.uk

Join in

Explore the wild side of Kent with our exciting range of events! Gain unique insights into nature with our experts on our Wilder Kent Safaris, forest bathing sessions, identification courses and more. Plus, each ticket supports vital conservation projects across the county. Get closer to nature, learn something new and help protect Kent's wild spaces.

BOOK NOW

kwtg.uk/events-winter24

Fundraise

Become a nature champion by fundraising for us! Our new fundraising packs make it easy for anyone to get involved. With sponsorship forms, posters, social media tiles and a fundraising guide, we've provided you with everything you need to rally support and help protect our wonderful wildlife.

SIGN UP TO RECEIVE YOUR PACK

kwtg.uk/fundraising-packs

Adopt a species

Bring Kent's wildlife closer to home with our Adopt a Species packs. Choose from a Highland cow, European bison, chough, grey seal and, new this year, beaver! Each pack includes an adoption certificate, fact file, project update and a soft toy or exclusive print. Profits from each purchase go straight into our wilding and conservation work to improve and expand the habitats of these beloved species. 🌿

ADOPT NOW

kwtg.uk/adopt-a-species





Our marvellous members

This year, we proudly welcomed over 2,000 new members to our ever-growing herd! Each and every one of you plays a vital role in our mission to protect and enhance Kent's diverse wildlife and natural habitats. We really couldn't do this without you!



Celebrating together

You are an important part of our mission, and we want to take every opportunity to celebrate you for standing with us, taking action and helping connect more people to the natural world. Therefore, we've launched some new initiatives to thank you for your support:

Birthdays

This year we introduced birthday cards for members, a chance for us to share our best wishes on your big day with a personal card and special offer inside. For members with little ones, don't forget we also offer nature-friendly birthday parties for kids! Head to kwtg.uk/wilder-birthdays

Anniversaries

If you've been a member with us for over six months, you can now claim free Kent Wildlife Trust wildflower seeds and see nature thrive at home. We hope that as you plant your seeds and watch them flourish, you are reminded of the difference you make to local wildlife and how lots of small acts make a big difference.

Also, when you reach your one-year anniversary with us, you will now receive a special certificate celebrating this milestone as a small token of our appreciation for your dedication and support.

Your feedback in action

We asked you what you thought was most useful when you joined us as a member, and we're thrilled to introduce brand new and improved welcome packs for our new members! If you have a friend or family member who wants to help create a Wilder Kent, they can now receive one of these informative and beautifully designed packs. Each one is filled with essential information about Kent Wildlife Trust, our reserves and projects and how they can get involved. It's the perfect way to share the joy of wildlife conservation and invite others to be a part of our united cause.



Why not consider gift membership as a Christmas gift?

Shop now at kwtg.uk/gift-membership-24 or scan the QR code.



Life Memberships

Many of you have asked for the opportunity to become a Life Member, so we're exploring the idea.

If you are interested please contact us on membership@kentwildlife.org.uk and you'll be among the first to know once the scheme launches.

IT'S COMPETITION TIME!

For your chance to win a **£50 Gift Voucher for our online shop**, simply answer the following question:

Q What is the scientific name for the red fox?



Email your answer to membership@kentwildlife.org.uk along with your name and address. The competition closes on Monday 20 January. A winning entry will be picked at random and contacted after this date. Good luck! 🍀

Win a £50 Gift Voucher for our online shop

Are you a UK taxpayer?

You can help us even further by saying YES to Gift Aid! We can claim Gift Aid on your membership subscription if you are a UK taxpayer at zero cost to you! Gift Aid is a tax relief **allowing UK charities to claim back 25p on every £1 you kindly donate.**

If you are a UK taxpayer and not yet signed up to Gift Aid, please email us at membership@kentwildlife.org.uk with your name and address and we will do the rest.

You can also email us if you have moved house, have a new email address or need to change any personal details.

We'd love to hear from you

We remain committed to our members and want to make sure we are continually improving our services. We'd love to hear your thoughts on the Wilder Kent magazine, and what you think about your member benefits, events, appeals and more. Is there something we could improve? A new idea we could explore? We're all ears.

Please take a few moments to complete our short survey at kwtg.uk/survey-2024

Your membership team



Paul Jobling
Membership & Partnerships Manager



Dean Ashby
Digital Engagement & Efficiency Manager



Lucy Eyre-Tanner
Membership & Fundraising Assistant

CONTACT US

Email us membership@kentwildlife.org.uk
Speak, write or visit
01622 357800 | Tyland Barn, Sandling Lane, Maidstone, Kent, ME14 3BD

We defend and restore

A bumper year in the Blean

2024 marked the first release of the Wilder Blean project's monitoring data. While it's still too early to fully understand how the bison are shaping the Blean, our Bison Rangers have already noticed tracks and glades emerging, with an abundance of wildlife at every turn.

This winter, we celebrated more good news alongside project partners Wildwood Trust: the birth of two more calves, just four days apart! Now with a herd size of eight, this growing family needs more space. We have started construction of four bison bridges, giving them access to even more woodland and providing visitors with unparalleled viewing opportunities.

Find out more at kwtg.uk/wilder-blean-project



Candelabra fungus



Coppicing at Yocketts Bank



RESERVE UPDATES

1 Coombe Down

After being purchased with the generous support of our members in 2017, we have worked hard to restore the open chalk grassland that would have existed here 20 years ago. After lots of scrub removal and fencing of the boundary, we reintroduced grazing for the first time in decades. Coombe Down was the last location for the frog orchid in Kent, and we hope that the return of our magnificent longhorn cattle will create the habitat needed for many orchids, flowering plants and the insects that live on them.



2 Hothfield Heathlands

First recorded in Kent in 2012, the beautiful candelabra fungus popped up at Hothfield Heathlands in 2021. After three years without any further sightings, we have been rewarded this year with several of these fungi fruiting across two sites: Hothfield Heathlands and on the outskirts of our South Blean reserve. This area in Canterbury is at risk of being lost to the proposed Winterbourne Fields development; the candelabra fungus is yet another species further at risk.

Find out more at kwtg.uk/save-the-blean

VISITOR NOTICE

As winter approaches, you may notice tree felling taking place at some of our woodland sites.

This planned management is crucial to improve habitats for wildlife and to ensure the health and safety of our visitors. By carefully removing selected trees, we create space and let in light, boosting biodiversity and helping plants and creatures to thrive. We must carry out this work in the winter to minimise wildlife disturbance.

You can support this urgent conservation work by supporting our new Legacy Landscapes programme enabling you to sponsor a plot on our reserves in the name of your loved ones.

Visit kwtg.uk/legacy-landscapes-winter

3 Oare Marshes

Our amazing team of volunteers have been busy replacing the roof on the Sea Wall Hide, wrapping up this year's re-roofing work on both bird hides. The Sea Wall Hide is popular for watching birds feeding on the exposed mud at low tide and for sea watching across the Swale. This winter brought many passing migrants, including several skua species, sandwich, little and common terns as well as rarer visitors like the Manx shearwater, black tern and osprey.



The sky's the limit for the red-billed chough

In July, we discovered that a pair of choughs released in 2023 had built a nest at Dover Castle and appeared to be preparing for the arrival of chicks. The birds managed to successfully hatch a chick and although it did not make it to adulthood, likely due to unseasonal high winds, this was a remarkable milestone for the project, and one we were not expecting for years to come.

This summer also saw the release of the second cohort of red-billed choughs to Dover.

This winter, we need to raise £50,000 to support the next cohort of chough chicks to be released in 2025. Find out how you can help from the insert in your magazine pack.

BISON CALVES AND CHOUGH ©TIM HORTON

CANDELABRA FUNGUS ©TIM HORTON

We inspire and collaborate



Inspiring individuals to take an active role in conservation is at the heart of our Wilder Kent 2030 mission. By sharing success stories of local wildlife recovery and showcasing the beauty of Kent's ecosystems, we aim to ignite passion within communities. By continuing to inspire one another and working collaboratively with our partners, we can nurture a thriving environment for generations to come. Here are just a few of our 2024 successes...




Volunteering

It's been a fantastic year for volunteering! This year, we launched our Volunteer Recognition Programme to celebrate the invaluable contributions of the many people who generously give their time and energy to support our mission.

From specially-curated welcome packs to pins marking service milestones, and from three volunteer-only events each year to our ever-popular Volunteer Awards, there's never been a better time to join our vibrant community!

Volunteering boosts mental well-being, offers a chance to make friends and teaches you about conservation. Not keen on outdoor work? We have plenty of opportunities for you indoors too!

 Ready to get involved? Check out our latest volunteer roles at kwtg.uk/volunteering-winter

Wilder Kent Awards 2024

This year's awards were a huge win for nature, with 87 winning groups and over 16,000 people taking positive action for nature. When asked "How connected to nature do you feel having taken part in the awards?", the average response was a resounding 8.9 out of 10.

Feeling inspired? Sign up to receive updates about Wilder Kent Awards 2025: kwtg.uk/wka-2025

Wilder learning

In 2024, our education programme has continued to thrive. We welcomed 115 groups and over 3,000 pupils to Tyland Barn and Sevenoaks Wildlife Reserve. Through outreach initiatives like the Wilder Schools Initiative and the Blue Influencer scheme, we reached an additional 2,800 children, inspiring the next generation of wildlife enthusiasts.

Could your class get wilder? Book a school visit at kwtg.uk/school-visits

Experiencing a Wilder Kent

In July, we hosted the Wilder Blean Festival and were joined by author Alice Hemming and illustrator Nancy Leschnikoff to mark the release of the Wilder Blean-inspired book 'The Bison and the Butterfly'.

Over 350 people also joined us for pond dipping, crafting and storytelling over the summer holidays at Tyland Barn, Sevenoaks, and West Blean.

We introduced Weekend Wellness events, including nature-based crafting, mindfulness walks and Forest Bathing, and by the end of 2024, over 300 people will have met the Bison Ranger team for unforgettable guided tours.

Join us for an experience soon! Check out the events guide on [pages 18 and 19](#).

FARMING UPDATE

Farming with nature



And it's needed now more than ever, with 2024 marked out as the UK's second worst harvest on record due to unseasonal rainfall.

Since 2019, our Nature Recovery team has been forging positive lasting relationships with farmers across Kent. Our nature-friendly farming projects include Government-mandated Tests and Trials to help in the design of the new Environmental Land Management Policy, working with Southern Water to pilot Farmer Clusters, and developing one of England's first Landscape Recovery Schemes with 20 landholdings involved across the Darent Valley.

Our work is a partnership with the farmers of Kent, putting nature into recovery alongside securing quality, sustainable food production.

Highlights from this year include:

- A Darent farmers' trip to the inspiring River Nar restoration project
- The successful first crop harvest from our regenerative agriculture Winter Wheat field trial
- A dynamic knowledge exchange among Low Weald farmer clusters (Marden and Upper Beult), focussed on protecting turtle doves and nightingales

 Find out more about our work at kwtg.uk/farming-nature

Corporate members

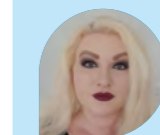
We are incredibly grateful to the businesses and parish councils that joined us as corporate members or partners in 2024. This year, more organisations than ever have stepped up to support nature in Kent, thanks to our exciting new partnership packages.



Thank you to our partners for supporting us this year: Martin Tolhurst Solicitors and Balfour Winery.

From membership to supporting projects like Bugs Matter, Sevenoaks or Bison Bridges, there are so many ways to get involved. Get in touch with the team today to make your business better, wilder and greener!

Your corporate team



Talia Sherrin-Gates
Head of Income Generation



Paul Jobling
Membership & Partnerships Manager

CONTACT US

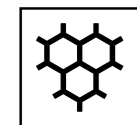
Email us
corporate@kentwildlife.org.uk
Speak, write or visit
01622 357800 | Tyland Barn, Sandling Lane, Maidstone, Kent, ME14 3BD



We strengthen and grow



Our teams are always working to be more efficient, explore new technologies and embrace innovations that enable us to make nature a priority across the county and beyond. The Kent Wildlife Trust Group is driving investment into conservation through unique initiatives that encourage businesses and organisations to support our Wilder Kent mission.



Wilder Carbon
Native habitats. Natural solutions.

Driving climate action with Wilder Carbon

Wilder Carbon is an initiative designed to enable the lock up of additional carbon and real biodiversity gains through the re-instatement of natural processes. Its goal is to become the recognised UK standard for UK natural climate solutions and we've achieved some great progress towards this in 2024:

- A successful submission for assessment under the Integrity Council for the Voluntary Carbon Market (ICVCM) Core Carbon Principles Framework.
- Working with the British Standards Institute, the BSI Nature Markets Standard is being developed, set for release in 2025, where Wilder Carbon will be among the first to be assessed.
- A partnership has been formalised with KITA insurance to develop a pioneering Risk Buffer Insurance product, providing greater confidence for buyers and landowners.
- The pipeline of Wilder Carbon projects is growing with an estimated 300,000 to 600,000 tonnes of CO2 equivalent set to be captured over 50 years and in parallel we have welcomed more Approved Buyers who are committed to investing into these projects.

Find out more at wildercarbon.com



A year on the wing with Adonis Blue

In 2024, Adonis Blue's ecologists have supported several councils to explore ways to attract private funding aimed at creating more biodiverse green spaces on public land through biodiversity net gain and other Nature-based Solutions.

The marine team is at the forefront of the Climate Resilient Coasts project, piloting the restoration of coastal floodplain grazing marsh in the Swale estuary. This vital habitat not only supports breeding and wintering waders but also provides carbon storage and flood protection for local communities. If successful, the scheme could be expanded across the whole of North Kent.

Meanwhile, ecologists are now surveying habitats beyond Kent: in East Sussex, Dorset, Hampshire and Shropshire as part of two projects with Natural England.

Looking ahead, Adonis Blue Environmental Consultants is committed to developing innovative biodiversity monitoring techniques, expanding our ongoing work to support the revival of rare species in Kent and driving all profits back into the Trust.

Find out more: adonisblueenvironmental.org.uk

Driving down carbon

At Kent Wildlife Trust, our mission to reduce our operational carbon footprint continues to drive progress. While the carbon captured through our conservation work, including nature reserves, restoration projects and wilding efforts means we are technically carbon neutral, we want to make the operational side of our organisation completely net zero by 2030. Though there is still much to be done, we're proud to report that we've consistently reduced our carbon footprint year-on-year since 2021, as reported annually by the Royal Society of Wildlife Trusts (RSWT).

We celebrated several key milestones in our carbon reduction journey in 2024:

We transitioned our electricity supply to 100% renewable energy sources, significantly cutting our reliance on fossil fuel sources.

In October 2024, we welcomed the first two electric vans in our move towards a fully electric vehicle fleet, with plans to replace all aging fossil fuel-powered vehicles within three years.

We have embraced agile working, allowing staff to work flexibly and remotely. This has not only reduced travel-related emissions but also has boosted the wellbeing of many of our staff.

We have encouraged many of our members to switch to eco-membership, receiving their Wilder Kent magazine digitally, further reducing the environmental impact of paper, printing, postage and waste.

We've implemented a rolling programme to replace outdated equipment and lighting with more energy-efficient alternatives. We're also committed to recycling across the Trust and wherever possible we work closely with suppliers who prioritise sustainability in their products and services.

These actions mark just the beginning of our journey, and we're excited about the continued progress we'll make in the coming years.



If you're not yet an eco-member with us, get in touch today! The only thing that will change will be that you'll receive Wilder Kent digitally. Not only will you be having an even more positive impact on the environment, but you'll be ensuring that more of our funds go straight into vital nature conservation across our county.

Contact us at membership@kentwildlife.org.uk

Photography Competition 2024

You can see more of David's work at davidjenner.co.uk

Wildlife Photographer of the Year

Thank you to everyone who entered our 2024 Photography Competition. We received so many beautiful images celebrating wildlife and nature across our county, from breathtaking landscapes and magical minibeasts to precious plant life and majestic birds in flight.

Congratulations to David Jenner, whose ethereal image, 'Mist on the Marsh', was crowned the overall winner of the 2024 Photography Competition.

About the image, David said: *St Thomas Becket Church stands alone on Romney Marsh surrounded by vast areas of marshland and a maze of watercourses. Built around the year 1200 in Fairfield near Rye, the desolate landscape and lack of modern-day influence makes it a perfect location for period dramas. I arrived just before 5am in the height of summer ready for the dawn light. As the sun rose and the mist rolled in, this magical composition came to life.*

Some of David's other works include:



Sunset over the orchids, taken at Marden Meadows



Red deer in the snow



Autumn colours



2024 Winners

Scan the QR code to see all the winners from the 2024 Photography Competition, or head to kwtg.uk/photo-comp-24



New ways to give

As one of our valued members, you're already helping to protect and restore nature in Kent. Keen to make your impact go even further? There are even more simple, and often free, ways to support our vital work...



easyfundraising

easyfundraising partners with over 7,500 brands who will donate part of what you spend to a cause you support – at no extra cost to you. All you need to do is set up an account and add the easyfundraising extension to your internet browser.

kwtg.uk/easy-fundraising

Share our appeals

By sharing our appeals with your friends and family through social media or asking your workplace to consider Kent Wildlife Trust as their charity of the year, you'll be helping us to not only raise funds but encourage others to help create a Wilder Kent too!

kwtg.uk/appeals

Become a Bison Benefactor

The Wilder Blean project has transformed conservation by reintroducing free-roaming bison to the Blean, where they help restore natural processes. By becoming a Bison Benefactor, you can sponsor a member of the herd and directly support their vital work in boosting biodiversity. Your sponsorship will help expand their habitat, monitor their impact, and share our findings to inspire a wilder future. With packages available for all budgets, this is your chance to be part of a groundbreaking conservation effort.

kwtg.uk/bison-benefactor-winter



Free Wills

Sow the seeds of a greener future by leaving a gift to Kent Wildlife Trust in your Will. Every gift, no matter the size, helps secure a Wilder Kent.

Visit will.octopuslegacy.com/kentwt to write a Will for free.

Making a difference, in memory

We extend our heartfelt thanks to the family and friends of Lorna Furniss, whose generous in-memory donations made it possible to purchase and install our new forest school shelter canopy. Thanks to your kindness, we were also able to acquire essential equipment that will enhance our forest school experience for all. To leave an in memory gift, please contact

terri.chalkley@kentwildlife.org.uk



“

I dedicate this landscape to you

PLOT BW/354654

Legacy Landscapes

More than 1 in 10 species in the UK faces extinction, but you can help create a Wilder Kent by sponsoring a wild space today at one of three unique reserves. If you're looking for a meaningful gift, a way to celebrate, or to honour a loved one, Legacy Landscape dedication supports conservation and protects Kent's wild spaces now and into the future.

kwtg.uk/legacy-landscapes-winter

BISON CALF © DONOVAN WRIGHT, MIST RISING FROM A QUIET POND & BLUE TIT © STEVE HEAD

WHAT'S ON?

STUDY DAYS

Attend a Study Day to increase your knowledge and enjoyment of Kent's wildlife and learn how you can make a difference.

Habitat Classification (UKHab) Online Training Course

13 January and 10 February 2025
10am – 3.30pm

Online

An online training day on the UK Habitat Classification, a new comprehensive classification system for vegetation habitats used in conservation and land management.

Amphibian Ecology and Survey Techniques

8 March 2025

2pm – 8pm

Tyland Barn and Vinters Valley Nature Reserve

Understand the importance of habitats to different amphibians. Recognise the key species and be part of a torchlight survey.



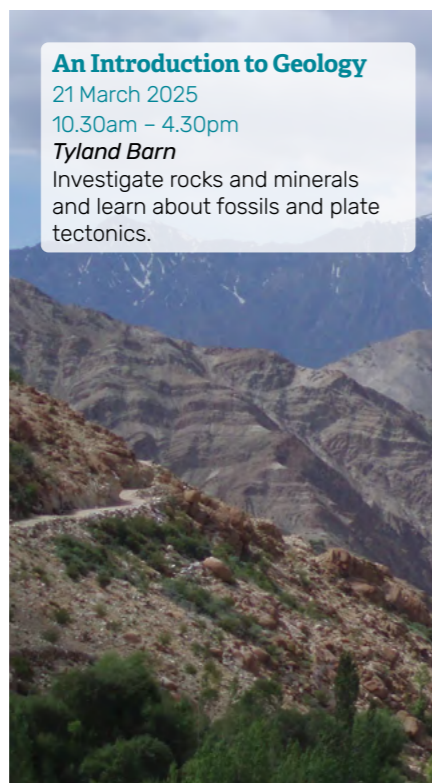
Please note this is just a small selection of the Study Days we have available. Scan the QR code to view all Study Days and book, or visit kwtg.uk/study-days-winter

An Introduction to Geology

21 March 2025
10.30am – 4.30pm

Tyland Barn

Investigate rocks and minerals and learn about fossils and plate tectonics.



Christmas at Kent Wildlife Trust

1, 14 and 21 December 2024

1pm – 2.30pm

Tyland Barn

8 and 15 December 2024

1pm – 2.30pm

Sevenoaks Wildlife Reserve

Wrap up warm and join us to celebrate Christmas with a festive craft, wildlife trail and hot chocolate by the cosy campfire.

Festive Workshop: Natural Decoration Making

12 December 2024

10.30am

Tyland Barn

Create decorations using natural materials to bring an environmentally friendly touch to your decor this Christmas.



Festive Workshop: Willow Wreath Making

12 December 2024

1.30pm

Tyland Barn

Give your festive decor a natural look by joining us to make a willow wreath covered with seasonal foliage.



Faversham Open Garden

11 May 2025

1pm – 5pm

Langdon Court, Faversham

Back by popular demand! A chance to see this garden in spring, as well as enjoying activities, tours and talks throughout the day.



Find out more and book at kwtg.uk/wilder-gardens-winter or scan the QR code.

WILDER GARDENS

Keen to transform your garden into a wildlife haven? As we go into the new year, now is the perfect time to start planning. If you're not sure where to start, or are new to gardening, join us for a seasonal gardening workshop, webinar or open garden.

Vegan-Organic Gardening Webinar

23 January 2025

6.30pm

Online

Hear from a vegan-organic grower and gardener about how to avoid animal inputs while creating a beautiful, productive and wildlife-friendly garden or allotment.

Seasonal Gardening Workshop

26 March, 18 June 2025

10am – 1pm

Tyland Barn

Learn the theory of wildlife-friendly gardening, as well as touring the Tyland Barn gardens and enjoying a hands-on activity.

WHAT'S ON?

EDUCATION

Explore our exciting opportunities for self-learning, exploration and discovery in the enchanting surroundings of our nature reserves.

Nature Tots

Give your little one a hands-on experience in the great outdoors with our parent and toddler group. Explore, discover and learn about the natural world in the wonderful surroundings of our nature reserves with sessions run by our Forest School leaders.

Over a 6-week programme, you and your child will build dens, whittle sticks, and toast marshmallows! They'll lead their own learning, develop new skills and foster a lifelong love for nature – all while creating unforgettable memories with you.

Book now for our 2025 programme now to join in with the fun!

Nature Tots is open for all pre-school aged children. Programmes run alongside school term times at both our Tyland Barn Nature Park and Sevenoaks Wildlife Reserve.

kwtg.uk/tots-winter

Wilder birthday parties

Looking for an extra special outdoor birthday adventure? We've got you covered with two fun-filled party styles and a range of wild themes to make your celebration unforgettable! Whether a Teddy Bear's Picnic is your cup of tea, or if it's learning survival skills around the campfire with a hot chocolate that sparks excitement for your child, we've got something for everyone:

Wilder Birthday Parties

- Minibeast Madness
- Teddy Bear's Picnic
- Wild, Wet and Wacky
- Wildlife Adventurer

Woodland Birthday Parties

- Woodland Survival
- Woodland Wildlife
- Woodland Crafts



Find out more and book at kwtg.uk/wilder-birthdays or scan the QR code.

BISON RANGER EXPERIENCES

Join our Bison Rangers themselves to delve deeper into the world of European bison, longhorn cattle and Iron Age pigs.



Bison Ranger Experience: A Morning at West Blean

21, 27, 29, 30 December 2024

10am – 2pm

These experience mornings give you the opportunity to meet the people who know the project best and offer the most in-depth access to the Wilder Blean project yet.



Bison Ranger Experience: Guided Tour

28 December 2024

10am – 12.30pm

Explore the Blean with our Bison Rangers to hear about how the animals manage the land naturally, and how their presence is already breathing life back into the landscape.

Find out more and book at kwtg.uk/ranger-experiences-winter

Be part of something wild



Kent
Wildlife Trust

Transforming Sevenoaks Visitor Centre and Wildlife Reserve

A flagship reserve for education,
exploration and conservation

We want to invest £1.5m into creating a destination
for education, exploration and conservation.

- Experience breathtaking views with brand-new lakeside decking
- Exciting events await you in our new discovery room
- Enjoy delicious treats or grab a coffee to go at our new cafe
- Introducing our first ever education-led playground
- Improvements to trails, habitats and hides
- Enhanced accessibility and improved car park

Transforming this flagship SSSI will help connect more people with
nature than ever before. Look out for more updates, details and ways
to get involved.

Want to help bring this vision to life?
Get in touch at fundraising@kentwildlife.org.uk



Registered with
FUNDRAISING
REGULATOR