

The member magazine for Kent Wildlife Trust

WilderKent

Summer 2025

PAGE 20 & 21

Where the wild things roam

Britain's first bison bridges are officially open, and they're leading the way to a wilder future.

PAGE 26 & 27

Show us your wild side

Find out what makes volunteering with us such a special experience.

PAGES 28 & 29

Family Zone

Looking for ways to reduce your carbon footprint as a family this summer? We can help!

Five years wilder

Halfway to Wilder Kent 2030

Check out our What's On Guide

Discover nature through our courses, family events, talks, walks & more!



Kent
Wildlife Trust



ENVIRONMENTAL CONSULTANTS

At Adonis Blue, we work with a wide range of clients across the UK, including businesses, farmers, developers, universities, and government bodies, to develop projects that protect and restore nature.

Our comprehensive suite of services ranges from traditional ecology, developments and Biodiversity Net Gain to nature-based solutions and innovative research projects.

With over 20 years of experience providing tailored solutions, our team of expert ecologists, land management advisors, natural capital analysts, and technical environment specialists are here to meet your needs.

The best part? All our profits are returned to Kent Wildlife Trust, helping to fund vital conservation projects and supporting Local Nature Recovery Strategies.

Together with our partners, we are uniquely placed to help you

make a difference for nature.



© AMY ROSS



Ready to get started?

Visit our website to explore our full range of services or email us to arrange a free consultation.

adonisblueenvironmental.org.uk

hello@adonisblue.org.uk



Welcome

to the **Summer edition** of Wilder Kent



Summer in Kent is a powerful reminder of why we do what we do. From sun-dappled woodlands alive with birdsong to wildflower meadows buzzing with life, the county is at its most vibrant, and it's the perfect time to explore the wild spaces that your support helps protect and restore.

In this edition of Wilder Kent, we showcase the vibrant organisation that Kent Wildlife Trust is and the diversity of our projects driving action and innovation. From the big and shiny (or shaggy and red-billed – **pages 20 and 22**) to laying the groundwork for the return of pine martens (**page 24**), we're finding bold new ways to let nature take the lead.

You'll find plenty of inspiration in this issue. Explore key reserves to visit this summer, including some of our most accessible and wildlife-rich sites (**page 10**). And find out how we're defending nature from ill-founded political attacks (on decidedly cute, and rather tiny, spiders being 'blockers' of economic growth - **page 30**).

All of this contributes to a bigger picture. This summer marks the release of our first ever impact report charting the progress of our Wilder Kent 2030 strategy over its first five years, and you can find our key headlines in this magazine (**page 8**). It's not always easy to measure the impact of conservation work, especially in a time of such rapid environmental change. But we are committed to doing so transparently, creatively and rigorously.

In the face of complex ecological challenges, Kent Wildlife Trust is pioneering a new approach: using wilding principles, embracing ecosystem complexity, and pairing on-the-ground restoration with remote technology to track real change over time. It's an ambitious path, but it's one we believe is essential if we are to create lasting change for wildlife, people, and climate.

And as we look to the future, our summer appeal – **Reconnect and Protect Nature's Voice** – reminds us of what's at stake. Too many children are growing up without meaningful experiences in nature. Our Wilder Education programme, which reaches over 5,000 young people each year, is working to change that, but we need your help to fund it for the next six months.

So, thank you. Your support, as members, volunteers, donors and advocates, is what makes this all possible. Enjoy this edition, and enjoy the summer.

Evan Bowen-Jones

Evan Bowen-Jones

Chief Executive of Kent Wildlife Trust | Follow me [X](#) [@EcoLlogik](#)

Kent Wildlife Trust is the leading conservation charity for the county of Kent.

Wildlife is in crisis. The natural world isn't just something for us to enjoy; it sustains us. The decline of nature puts our very survival and prosperity under threat. It doesn't have to be like this.

Our vision is for a better, wilder future. We engage with politicians, business leaders, landowners, communities and people so that we can all work together to protect wildlife.

The Wilder Kent magazine team



Editor
Mollie Amor



Designer
Laura Hersey

With special thanks to our article authors and proofreaders Rosie Parry-Thomson and Kate Clack.

CONTACT US

Email us
comms@kentwildlife.org.uk

Speak to us
01622 662012

Find us online
kentwildlifetrust.org.uk

Write or visit
Tyland Barn, Sandling Lane, Maidstone, Kent, ME14 3BD

Let's be wilder together

Follow us on social media for updates and to share nature photos and your thoughts with us!

JUST SEARCH FOR

Kent Wildlife Trust



Charity no. 239992. Company no. 633098.
Registered at the above address.

Contents

GOAL 1

We defend and restore

08 Five years of
Wilder Kent 2030

10 Updates from our reserves

12 6 dragonflies to see
in Kent this summer



22 Red-billed return

GOAL 2

We inspire and collaborate

05 Note from Chairman

06 Our marvellous members



19 Wilder perspectives

26 Volunteering spotlight



GOAL 3

We strengthen and grow

24 Science zone



A note from... the Chairman Chris West



My tenure as a Trustee – and Chair – comes to an end this July. It has been a genuine privilege to have served alongside many skilled and experienced Trustees, guiding the governance of the Trust in line with achieving our Wilder Kent 2030 strategy.

The past decade has seen us successfully navigate some unexpected and significant challenges, most notably the Covid pandemic. Alongside this, we have faced the growing realisation that traditional conservation management practices have not been enough to halt the decline of nature in Kent. The Trust has responded by investing in innovative approaches to habitat restoration, pioneering the use of ecosystem engineers, trialling nature-based solutions across the county, and developing Wilder Carbon – a truly forward-thinking model.

Among the many memories I will cherish, I want to highlight just a few from this past year. First was seeing red-billed choughs flying wild once again over Dover – a powerful symbol of decades of work led by the Trust to restore chalk grasslands and build partnerships that made their return possible. Second is witnessing the success of conservation efforts in Marden, where farmers and the local community, supported by the Trust, have worked tirelessly to protect lower Wealden habitats and turtle dove populations – now boasting the highest number recorded in the UK. And finally, attending a beaver study day – one of many excellent events run by the Trust – took me back to the banks of rivers I knew as a child, now visibly transformed by the return of this incredible species.

So, I stand down as Chair with immense pride in the achievements of the Trust's talented, committed and inspirational staff. But there is no time to rest – the clock is ticking towards 2030. The Trust must remain brave, bold and resilient, continuing to lead the way in delivering solutions to the nature and climate crises.

I want to take this opportunity to express my sincere thanks to my fellow Trustees, and to all the wonderful staff, members, volunteers and supporters of Kent Wildlife Trust. You each play a vital role in achieving our collective mission to create a Wilder Kent.

Chris West

Chris West

Chairman of Kent Wildlife Trust, 2015 - 2025

Visit our reserves

You're likely living just a few miles away from a Kent Wildlife Trust nature reserve, and summer is the perfect time to get exploring! Our Flagship Reserves are a great place to start, and our Wildlife Arks are vital sanctuaries supporting diverse species. While our Hidden Gems experience low footfall and often have no public access, they exemplify our wilding principles, restoring natural processes with minimal human intervention.

PLAN YOUR VISIT TODAY
kwtg.uk/visit-reserves



Shop for nature

Shop sustainably with our online store! Discover Kent-based products, eco-friendly clothing printed to order, and gift vouchers for unforgettable wildlife experiences. Whether treating yourself or finding the perfect gift, every purchase supports our work to protect nature and create a Wilder Kent.

**SHOP NOW AND
MAKE A DIFFERENCE**
kwtg.uk/shopping



Sign up to our newsletter

If you're not signed up to our fortnightly email newsletter, you're missing out on regular updates on our projects, campaigns and our reserves. It's a way for us to keep you involved in all of the ways your membership donations help us protect and restore nature across Kent and beyond. Plus, as a member, keep an eye out for early access to selected events, and discount codes for our shop!

SUBSCRIBE
kwtg.uk/subscribe-enews

Explore our blog

Our blog is bursting with fascinating wildlife insights, expert tips, and behind-the-scenes stories from our reserves and is the perfect way to stay connected to nature at home. Explore updates on our projects, seasonal wildlife highlights, and practical advice for supporting nature in your own space.

READ HERE
kwtg.uk/explore-blog



Our marvellous members



Growing stronger, together

Our amazing community of supporters continues to grow. Over the past year, we've welcomed 424 new members, joining over 30,000 other passionate individuals who care deeply about protecting Kent's beautiful wildlife and natural habitats.

This growth is a testament to the dedication and passion of you, our marvellous members, and we are incredibly grateful for your continued support. Every new member who joins us helps strengthen the voice of wildlife conservation across the county, ensuring that together, we can continue our important work in safeguarding nature for future generations. 🐾

Life
Membership
NOW
AVAILABLE

Upgrade to Life Membership

Thanks to your feedback, we are excited to unveil a new and meaningful way to support the Trust: Life Membership. This unique opportunity allows you to make a long-term commitment to Kent Wildlife Trust while enjoying a range of exclusive benefits.

Choose from two Life Membership options:

Individual Life Membership
£1,000

Joint Life Membership
£1,500

Why become a Life Member?

As a Life Member, you will receive a range of special benefits that celebrate your dedication to nature:

Free car parking:

Enjoy the convenience of free car parking at our nature reserves, so you can spend more time exploring the beautiful landscapes you help protect.

Gold plated butterfly badge:

A symbol of your lifelong commitment to wildlife conservation, this beautifully crafted badge is a special and lasting reminder of the difference you're making.

10% discount across everything:

Enjoy a 10% discount on all events, activities and shop purchases – it's our way of saying thank you for your lasting support.

By upgrading to Life Membership, you're not just supporting us, you're creating a lasting legacy for wildlife. Your one-time commitment fuels vital conservation work and places you among a passionate community of dedicated wildlife supporters.

Whether you're renewing your current membership or ready to take the next step with Life Membership, contact our membership team for more details at membership@kentwildlife.org.uk or call **01622 357800**. 🐾

Competition time!

WIN a £50
Gift Voucher
for our
online shop



© A RIGGS

For your chance to **win a £50 Gift Voucher for our online shop**, simply answer the following question:

There are approximately 1,000 species of bats all over the world. How many of them can be found in the UK?

A 18 species

B 25 species

C 43 species



© PHILLIP GREEN © JOHN BLACK

Email your answer to **membership@kentwildlife.org.uk** along with your name and address. The competition closes on Monday 31st August 2025. A winning entry will be picked at random and contacted after this date.

Good luck! 🍀

Are you a UK taxpayer?

You can help us even further by saying YES to Gift Aid!

We can claim Gift Aid on your membership subscription if you are a UK taxpayer at zero cost to you! Gift Aid is a tax relief allowing UK charities to reclaim an extra 25% in tax on every eligible monthly or yearly donation. **We can currently claim back 25p on every £1 you kindly donate**, but only if you say we can!

If you are a UK taxpayer and not yet signed up to Gift Aid, please email us at **membership@kentwildlife.org.uk** with your name and address and we will do the rest.

We'd love to hear from you

To ensure our magazine continues to inspire and inform, we need your feedback! Your insights and opinions are essential in helping us deliver the content that matters most to you. Whether it's about our articles, photography, or overall design, we would love to hear your thoughts!

Contact us using the details below to update your contact details or preferences, let us know your date of birth to receive a gift from us on your special day or to share your ideas, questions or suggestions about how we could improve your membership.

Thank you for being part of the Kent Wildlife Trust family. Together, we can continue to make a real and lasting difference for wildlife in Kent.

Your membership team



Paul Jobling
Membership & Partnerships Manager



Dean Ashby
Digital Engagement & Efficiency Manager



Lucy Eyre-Tanner
Membership & Fundraising Assistant

CONTACT US

Email us
membership@kentwildlife.org.uk

Speak, write or visit
01622 357800 | Tyland Barn, Sandling Lane, Maidstone, Kent, ME14 3BD



Five years wilder

Our Wilder Kent 2030 Impact Report

In 2019, we launched an ambitious strategy – Wilder Kent 2030 – to reverse biodiversity decline and put nature in recovery across the county and beyond. Now, five years in, we're taking stock. Our progress report reveals the tangible, inspiring, and sometimes sobering, outcomes of our work so far.

The report doesn't just show the numbers. It tells the story of bold projects, collaborative partnerships and extraordinary people. The report shares our biggest wins, toughest lessons, and the urgent work still ahead. It's also a moment to reflect and recommit to building a Wilder Kent.

In this edition of Wilder Kent, we're showcasing just a fraction of what we have achieved together in five years. The full report will be available online and dives deeper into case studies, from Kentish milkwort to Wilder Kent Awards, and from Bugs Matter to Farmer Clusters. 🐛



**VIEW THE IMPACT
REPORT ONLINE AT**

kwtg.uk/impact-report-2024



32,000
members



44,685
volunteer days



53,000
**social media
followers**



16,000
**people taking
action for nature
through the 2024
Wilder Kent Awards**



85

Nature Reserves
managed by Kent
Wildlife Trust

153
hectares

of freehold
land acquired
for nature
since 2019



UK's first
wild Bison herd
flourishing



15,600
man orchids

at Darland Banks
- the UK's largest
population

Wilder grazing on
68% more
reserves than in 2019



**Swanscombe
Peninsula**

SAVED

from development



First wild
red-billed
chough
chick hatched
in over 200 years



Updates from our reserves

As summer arrives and the sun shines brightly across our reserves, we enter a new, exciting and busy time of year. Our dedicated team will carry out essential maintenance and restoration on our sites and, of course, welcome lots of visitors as the warmer weather arrives - and not just the two-legged kind.

For those looking for more accessible sites, we've picked out some reserves with easier access paths.



1 Cromers Wood

Enjoy views over the coppiced woodland and watch the many insects, such as migrant hawk dragonflies and speckled wood butterflies, that thrive along the woodland. Cromers Wood allows a level walk on a stoned track to a couple of picnic benches (approximately 280m).



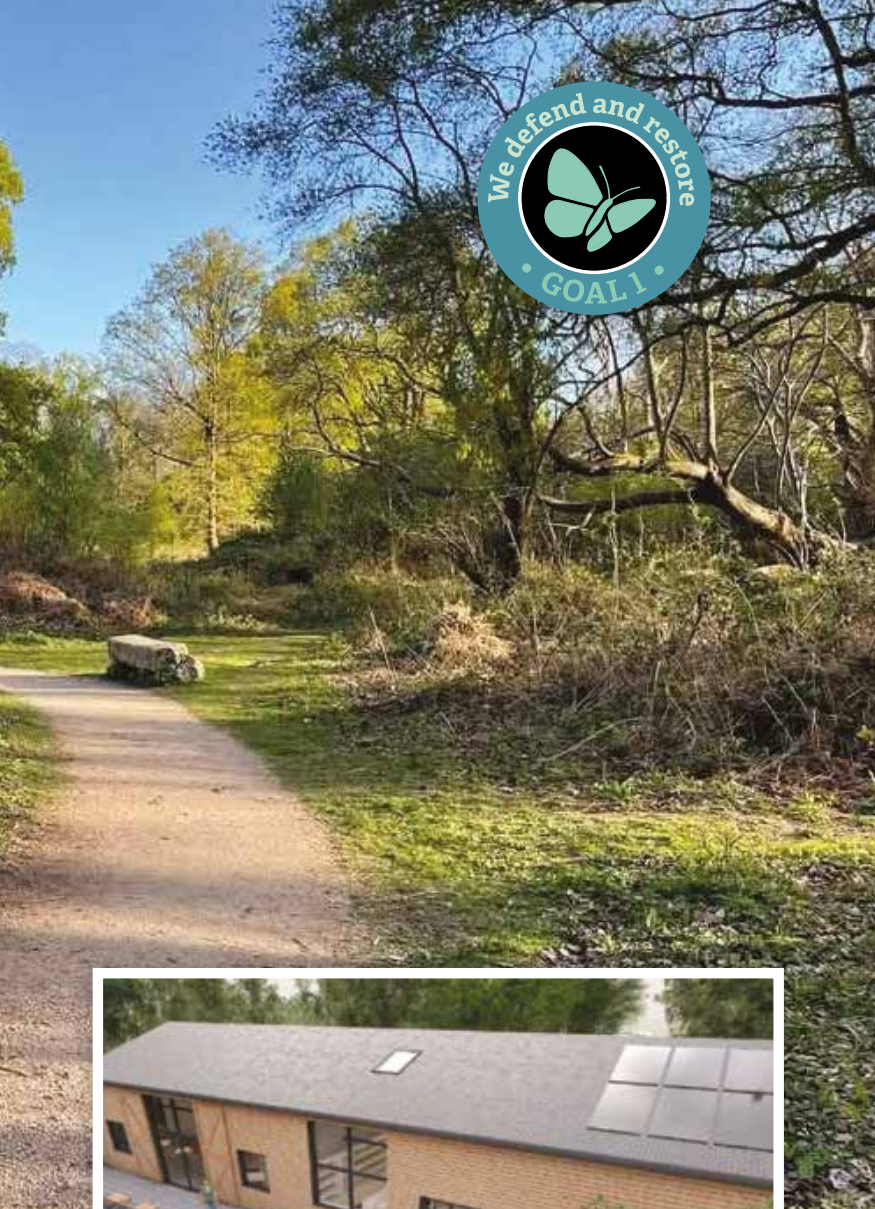
2 Hothfield Heathlands

Discover our Triangle Trail at Hothfield Heathlands this summer. Starting directly from the car park, this fully accessible trail consists of a smooth flat surfaced path, leading under ancient trees home to nesting birds such as the great spotted woodpecker, nuthatch and spotted flycatcher. The 500m trail is perfect for buggies and wheelchairs, with seating points for people needing a rest or just an opportunity to appreciate the surrounding birdsong and insects.

3 Oare Marshes

Enjoy our internationally recognised Oare Marshes reserve, important for migratory and wetland breeding birds. Accessible via stoned paths and large mobility kissing gates to both the Sea Hide and the East Hide, this location is perfect for viewing a range of waders and wetland birds on the Swale and the East Flood. Seasonally accessible for wheelchair users, there are two dedicated blue badge parking bays next to the path that leads to the East Hide.





4 Sevenoaks Wildlife Reserve

Undergoing a transformative refurbishment, our visitor centre at Sevenoaks will begin a new chapter with modern facilities and an improved visitor experience.

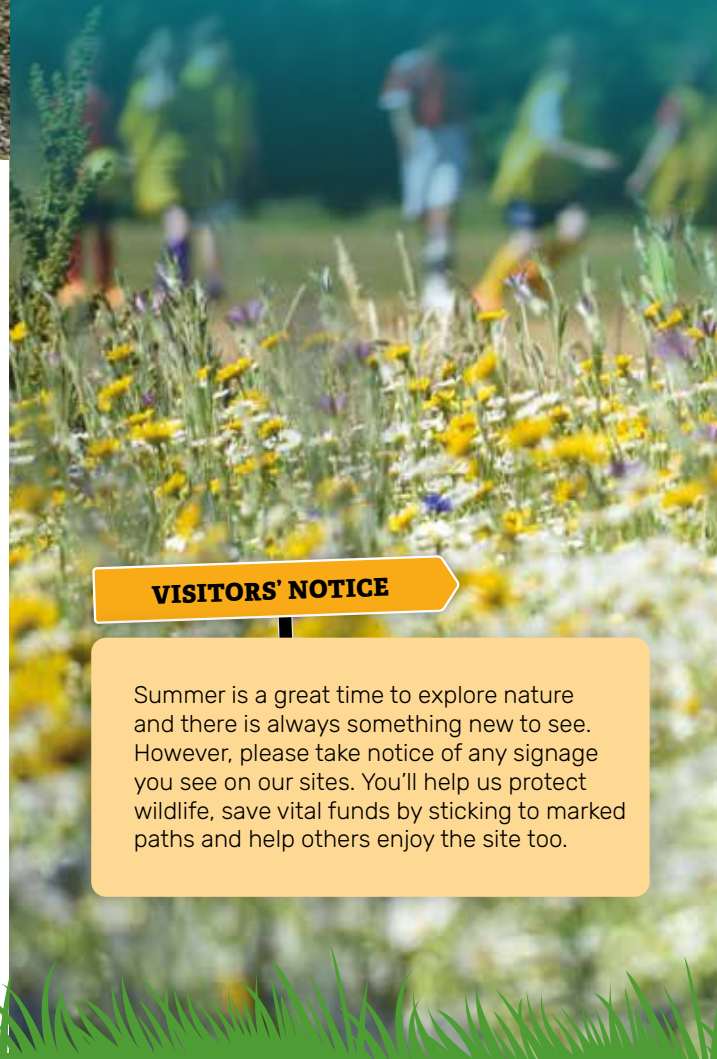
Planned upgrades include new viewing deck with stunning views across the lake, as well as upgrades to accessible parking, improved facilities and parent and child amenities. You can also explore a new history trail, with tactile panels and posts for curious fingers that depicts key elements of original reserve management. Much of this was ahead of its time and still matches our Wilder Kent vision after more than 60 years.

During construction, the reserve itself remains open to visitors but with some parking restrictions. Check out Local News on page 30 for more information.



5 Holborough Marshes

This reserve is a highly varied wetland reserve that can be visited by public transport - it's less than 10 minutes walk from Snodland railway station. Paths are generally flat, with a few medium mobility kissing gates and a main concrete track that offers views across the marsh and down to the river Medway. In summer, check out the viewing screens to see if you can spot any wetland birds or dragonflies.



VISITORS' NOTICE

Summer is a great time to explore nature and there is always something new to see. However, please take notice of any signage you see on our sites. You'll help us protect wildlife, save vital funds by sticking to marked paths and help others enjoy the site too.

6 dragonflies to see in Kent this summer

There are 57 recorded species of dragonflies and damselflies in the UK. Flying at up to 30 miles per hour, these incredible insects can commonly be seen on many of our nature reserves at this time of year.

Typically living no longer than six to eight weeks (much less for damselflies), dragonfly larvae can live underwater for up to five years (depending on the species and the temperature of the water) before emerging as adults.

There are many cultural perceptions surrounding these fascinating creatures. In European cultures, dragonflies and damselflies have been associated with the devil or misfortune, with old European names for dragonflies including 'devil's darning needles' and 'water witch'. In Eastern cultures, dragonflies are often seen to symbolise summer and happiness, but also fragility.



See the spectacle for yourself in Kent



1 Keeled skimmer

The keeled skimmer's only Kent habitat is found at Hothfield Heathlands. It requires wet, acidic bogs, and is recognised by its slender blue body and its habit of sitting with its wings pointing forward. Climatic change towards hot dry weather is reducing the pools of water necessary for this species to breed, so Kent Wildlife Trust are working hard to maintain water levels as high as possible at this reserve for this magnificent insect.

Spot them at: Hothfield Heathlands



2 Downy emerald

This delicate metallic green dragonfly with green eyes and a hairy body is particular about its ponds. Needing woodland nearby, it only occurs in a few locations. When it finds a good spot, like Sevenoaks Wildlife Reserve, it is found in large numbers. Spending three years underwater, it flies for just two months, May to June.

Spot them at: Sevenoaks Wildlife Reserve



3 Golden-ringed dragonfly

The narrow, acidic stream that flows through Brenchley Wood is ideal for the larvae of one of our most spectacular dragonflies, the golden-ringed dragonfly. Their long, narrow bodies are black with bright, yellow bands and the head is almost entirely made up of its stunning green eyes. Males patrol along suitable breeding sites and can also be found hunting for insects over the open heath on the reserve.

Spot them at: Brenchley Wood



4 Emperor dragonfly

The emperor dragonfly, one of the largest and most striking dragonflies in Europe, is commonly observed at Conningbrook Lakes Country Park. This species thrives in habitats like the park's well-vegetated lakes and ponds, where females lay their eggs in floating pondweed. Adult emperor dragonflies are on the wing from June to August, displaying impressive aerial skills as they hunt for insects mid-flight.

Spot them at: Conningbrook Lakes Country Park



5 Norfolk hawker

The Norfolk hawker is identifiable by its bright green eyes and brown body adorned with a yellow triangular mark. Historically confined to the Norfolk Broads and north east Suffolk, it has recently expanded its range, including our reserve at Hunstead Woods. The Norfolk hawker is legally protected under the Wildlife and Countryside Act 1981.

Spot them at: Hunstead Woods



6 Broad-bodied chaser

One of the easier dragonflies to spot, the broad-bodied chaser can be seen on most clean pond systems. Tyland Barn is a particularly good site, with our raised board walk offering great views of the pond. The males have a distinctive flat, blue abdomen, while females have a yellow body.

Spot them at: Tyland Barn

Have you spotted any of these aerial acrobats?

We love to see what you spot on your visits to our reserves. Please tweet us your best photos! [@KentWildlife](https://twitter.com/KentWildlife)

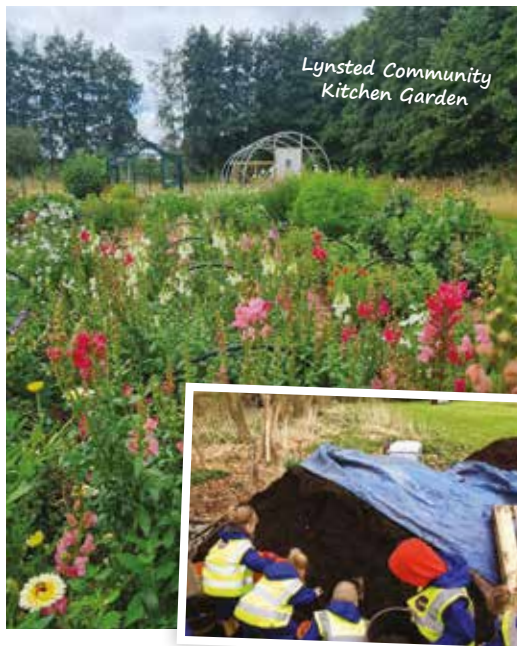
Wilder Kent Awards

Since its launch, the Wilder Kent Awards have played a vital role in helping Kent Wildlife Trust achieve its vision of a Wilder Kent by 2030. The awards celebrate schools, community groups, businesses and more who are taking action for nature. Last year saw over 16,000 people get involved and make a tangible difference for nature and wildlife in Kent and we anticipate even more taking part in 2025.

Each year, we are inspired by the creativity and commitment of those who step up to defend wildlife and restore natural habitats – whether by rewilding school grounds, transforming community green spaces, or changing working business practices to be more sustainable. The Wilder Kent Awards don't just celebrate success – they inspire change.

Having won an award in 2023, Lynsted Community Kitchen Garden were inspired to set up a biodiversity working party within the volunteer group, and oversaw a drive to create a diverse range of habitats, particularly for nesting birds, hedgehogs, insects and small mammals.

"First entering WKA in 2023 was so important to LCKG. Gaining a silver award added huge positivity and momentum to what we had been doing in terms of growing food sustainably and using the land to support and celebrate nature."



Lynsted Community Kitchen Garden



Students at Fairview Community Primary School getting their hands dirty!



Planting efforts by pupils at Fairview Community Primary School



Community engagement for the Duke of Edinburgh awards at Lynsted Community Kitchen Garden



Forest School area at Fairview Community Primary School

Fairview Community Primary School found taking part in the awards transformative, not only for their grounds, but also for their pupils.

"The children are very passionate about looking after our forest school area and love looking for insects, new flowers and how our saplings have grown. They have respect for nature and are committed to enhancing the area for wildlife."

If you or someone you know is part of a school, community group, business, or village, town or city council taking action for nature and wildlife in Kent this year, then sign up for the Wilder Kent Awards 2025 and gain recognition for your efforts. 🦋



SIGN UP AT
kwtg.uk/wka-summer

JOIN US IN CELEBRATING EXCELLENCE

**Become a proud
Sponsor of the Awards**

To find out more or become a sponsor email corporate@kentwildlife.org.uk or call 01622 357800.

What's On this summer

9 - 13 July

WILDER BLEAN FESTIVAL

BOOK NOW AT kwtg.uk/wilder-blean-festival

Celebrate the opening of the UK's first bison bridges with us, as well as the third anniversary of the herd arriving in Kent. We're putting on an exciting selection of Wilder Blean events over one fantastic weekend!

Online Talk: Meet the Bison Rangers

9 July, 6.30 - 7.30pm

Meet the Bison Ranger team for an online talk to find out what it's like to work at this pioneering wilding project and hear the latest news firsthand.



Introduction to woodland crafts

10 July, 2 - 4pm

Crafting outdoors is great for your wellbeing! Use the wild West Blean woods as your inspiration and get creative with natural materials.

Bison Ranger woodland tours

**11 & 12 July,
10am - 1pm**

Don't miss this special opportunity to explore West Blean woods with a member of the Bison Ranger team.



Introduction to Forest Bathing

10 July, 10am - 12pm

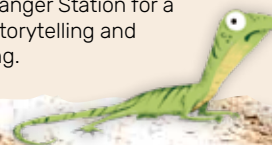
Meet our qualified Forest Bathing instructor for an introduction to this calming and restorative practice.



The Bison and the Butterfly - Meet the author and illustrator

13 July, 10am - 12pm

As part of the first Canterbury Children's Literature Festival, Alice Hemming and Nancy Leschnikoff will be visiting us at Heather Corrie Ranger Station for a fun morning of storytelling and character drawing.



Scan this QR code to view all our events and book, or visit kwtg.uk/events-summer



FAMILY EVENTS



Wilder Holiday Club

The summer holidays are right around the corner, so it's the perfect time to treat the kids to days packed full of fun and activity! If they have a passion for nature and the great outdoors, we have an incredible adventure in store for them.

BOOK NOW AT kwtg.uk/holiday-club-summer



Celebrate from JUST £160
Available all year round - rain or shine!

Birthday Parties

Fun is the name of the game with our Wilder Birthday Parties. We've created two different party styles and a variety of themes to ensure there's something for everyone! Parties are bookable on a range of weekends throughout the summer at Tyland Barn, Maidstone.

BOOK NOW AT kwtg.uk/parties-summer

Pond dipping

Every Friday from 25 July – 29 August, 10.30am – 12pm and 1pm – 2.30pm

Join us at Tyland Barn for some pond dipping this summer. See what creatures you can find, discover the ways they have evolved and adapted to live in an underwater environment, and meet them all up close through the magnifier!



Thinking ahead?

You can book now to secure your space on our Autumn term of Nature Tots (ages 2 – 5) or Home Ed Nature Explorers (ages 4 – 11) to ensure a season of wildlife and adventure.

BOOK NOW kwtg.uk/tots-summer and kwtg.uk/home-ed-summer

Are you a teacher?

You can book your class for a school trip to one of our education centres and have a wild day out, with available sessions including Pond Dipping Detectives, Magical Minibeasts, Perfect Plants, Birds of Prey, Beavers of Kent, and much more!

GET IN TOUCH AT education@kentwildlife.org.uk



WILD ABOUT GARDENS OPEN GARDENS AND WORKSHOPS

BOOK NOW AT kwtg.uk/gardens-events-summer

Tyland Barn Open Garden

26 July, 11am – 3pm

Tyland Barn, Maidstone ME14 3BD

Free with optional add-on activities

Join us at our headquarters for a summer open garden with free tours and advice from our knowledgeable gardens team. The Pond Cafe will be open, and we'll also have plants for sale. Additional activities for all ages include seed sowing, pond dipping and cyanotype printing.

Summer into Autumn Wilder Gardening Workshop

25 September

Tyland Barn, ME14 3BD

Get hands-on learning about wildlife gardening with this seasonal half-day workshop. Get immersed in talks, tours, Q&As and practical activities such as taking cuttings or making a mini bug hotel to take home.

**£35
PER
PERSON**

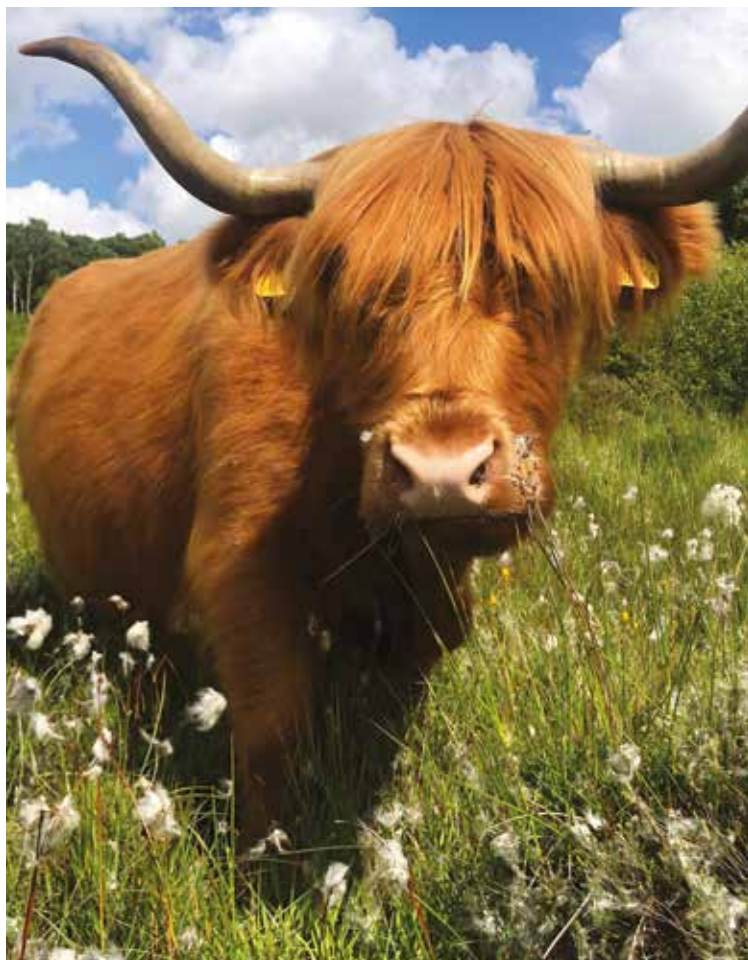
Bison and Butterfly trail

14 July – 29 August

Tyland Barn, Maidstone, ME14 3BD

Join Bison at Tyland Barn for another trail adventure this summer! Help Bison find her wildlife friends around the Nature Park and learn all about them. Return your spotter sheet to us for a prize!





£35 per ticket

WILDER KENT EXPERIENCES

BOOK NOW AT kwtg.uk/experiences-summer

Join our Area Wardens and Rangers for a special selection of wildlife experiences across the county.

Beavers, Nature's Engineers at Ham Fen

20 July, 10am – 1pm

CT14 0DZ

Ham Fen is home to the UK's first official beaver release project and Kent's last remaining fenland. Over the last 20 years the resident beavers have transformed the reserve. Come and see for yourself the evidence of their activity including gnawed tree stumps, dams and lodges.

Walk with Cows at Oare Marshes

19 August, 1 – 4pm

ME13 0QD

Join our Wilder Grazing Ranger for a walk around Oare Marshes to meet the cattle who work to manage the land naturally. Oare has a mix of habitats, and you'll find out how the behaviour of the cattle improves these for the benefit of other species.

Walk with Cows at Ham Fen

10 September, 1 – 4pm

CT14 0DZ

Visit this fenland to discover how cattle are being used to support the efforts of the resident beaver in restoring this rare landscape. You'll have the chance to meet the cows and learn more about the theory behind 'wilder grazing'.

WELLNESS EVENTS

BOOK NOW AT kwtg.uk/wellness-summer

Soothe your mind and spend a couple of hours with us, connecting with the great outdoors and soaking up all the wellbeing benefits nature has to offer.

Crafting with Nature at Tyland Barn

19 July, 10am – 12pm

ME14 3BD

Walk and Craft at Sevenoaks

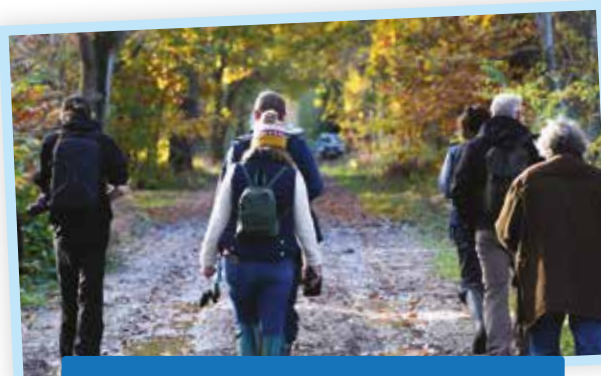
19 July and 16 August, 10am – 12pm

TN13 3DH

Wellness Walk at Hothfield Heathlands

17 August, 10am – 12pm

TN26 1AN



© TIM HORTON

Bison Ranger Experiences

BOOK NOW AT

kwtg.uk/ranger-experiences-summer

27 July, 10 August, 23 August, 14 September, 10am – 2pm

West Blean and Thornden Woods, CT6 7NZ

If you can't join us for the Wilder Blean festival, there's still plenty of opportunity to meet the Bison Rangers for unparalleled insights into the characteristics of the bison and the impact they're having in the transformation of the woods.

STUDY DAYS AND COURSES

Attend a Study Day or course to increase your knowledge and enjoyment of Kent's wildlife. This is just a small selection of events we have available – you can view all our Study Days and Courses at kwtg.uk/study-days-summer

Ecology of Bumblebees and their Identification for Intermediates

9 August, 10.30am – 4pm
Tyland Barn, ME14 3BD

An identification day covering all bumblebee species of Britain. Dive deeper into their ecologies and life cycles and receive an update on the *Bombus subterraneus* reintroduction project.

Butterflies of Kent

20 August, 10am – 4pm
Tyland Barn and Queendown Warren

Butterflies can tell us so much about the quality of a habitat and the impacts of climate change. Learn how to identify and about the ecology of the butterflies we have here in Kent before heading out to spot some butterflies found in chalk grasslands.

Autumn Migration in Kent

5 September, 10am – 4pm
Oare Marshes

Observe wetland birds and learn how to identify them. Find out how birds navigate and the remarkable migrations they make.

Introduction to Shieldbugs and Leatherbugs

13 September, 10am – 4pm
Tyland Barn, ME14 3BD

Find out how to identify these curious critters, where to find them and about their life cycles.

Pine Marten Ecology and Conservation

20 Sep 2025, 10:30am – 2pm
Wildwood Trust, Canterbury

Find out more about Pine Martens and learn about the South East Pine Marten Restoration Project.



Scan this QR code to view all our events and book, or visit kwtg.uk/study-days-summer



Fees or donations apply and booking is essential.

Shop for nature

Bugs Matter

Celebrate the little guys! We know that bugs can get a raw deal. They're seen as pests, inconvenient to our modern lifestyle and sometimes perhaps a bit creepy. But these little superheroes are vital to life on Earth. Our latest collection creates the opportunity to create space for them in your gardens and show your support for these often-misunderstood critters.

kwtg.uk/shop-bugs-matter

Adopt a Species

Our adoption packs mean you can champion Kent's most iconic species. Will you choose the playful beaver, majestic Highland cow, mighty European bison, vibrant red-billed chough or the graceful grey seal? Each adoption pack comes with a certificate, stunning photograph, facts sheet and the latest project updates. Plus, you'll receive a soft toy or unique lithograph to treasure!

kwtg.uk/adopt

Gift Membership

By giving the gift of wildlife, you and your loved ones can help weave wildness back into the fabric of our county across countless sites and reserves, and protect our communities, families and the Garden of England for future generations to come. They'll receive our brand-new welcome guide and all of the perks you enjoy. You can also include a personalised message to welcome them to the herd!

kwtg.uk/gift

Gifts for Nature

Enhance your garden's biodiversity with our nature-loving gifts! Choose from our range of bird feeders, cosy nest boxes and charming insect hotels to create a haven for wildlife outside your window. We also offer wildlife-focused gift bundles, thoughtfully curated to bring nature closer to home.

kwtg.uk/shop-nature

Find your perfect fit

You can show your love for our county's wildlife with our printed-to-order clothing! From t-shirts and jumpers to hoodies, each piece showcases our local wildlife. You'll be wearing your passion proudly while supporting vital conservation efforts.

kwtg.uk/shop-clothing

From t-shirts and jumpers to hoodies





Liz Milne



Wilder perspectives

They say it takes a village to raise a child – well Liz Milne, Natural Environment & Coast Manager at Kent County Council, believes it takes a county to create a strategy for nature.




So often, strategies and plans are designed with limited involvement of those that will ultimately be responsible for delivering them, with the first opportunity for input being at consultation.

The development of the Kent and Medway Local Nature Recovery Strategy adopted a different process. From the very start, we wanted a fully collaborative approach, that involved stakeholders – all interested and invested citizens, local authorities, organisations and businesses – in the design of, and making decisions for, nature recovery in the county. It was crucial that the Strategy addressed the county's environmental threats and reflected our wildlife's needs and priorities. This would ensure we truly put the "local" into the Local Nature Recovery Strategy.

This was a big ask – participation would require a huge commitment of time, effort and resources from our partners and stakeholders. And for those perhaps not directly involved in nature recovery work but whose input was critical, we would be taking them away from their core business – and in difficult and uncertain economic times. So, we embarked upon the work with some trepidation.

And the result? Well, Kent and Medway stepped up and in a massive way. We were blown away by not only the numbers, but the passion and commitment to make this a strategy that's both reflective of nature's needs and the delivery of ambitions for its future.

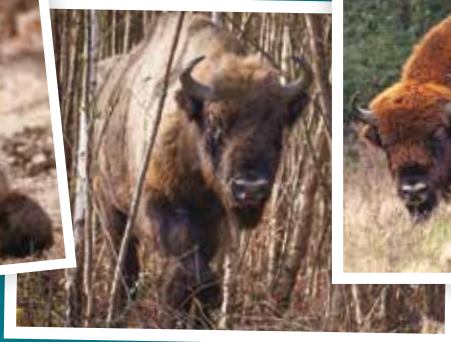
Over 1,000 individuals were engaged at some point in the year-long development, with over 678 people (representing 285 different organisations bodies, businesses, affiliations and more) attending workshops that determined the pressures, agreed the priorities, designed the actions and mapped the target areas. In addition to these workshops, many also contributed through our technical advisory groups and steering groups. The level of expertise and knowledge gleaned from all this input was phenomenal and one which has resulted in a robust strategy for nature's recovery. And Kent Wildlife Trust, and its many members, were among these numbers, so we say a big thank you to you all.

Of course, following the Strategy's publication, the real hard work starts now – but a further benefit of this approach is that we already have the partnerships and momentum to turn this ambition into reality. 



FOR MORE INFORMATION

on the Kent and Medway Local Nature Recovery Strategy see makingspacefornaturekent.org.uk



Where the wild things roam

Britain's first bison bridges are officially open, and they're leading the way to a wilder future.

A hoof-thumping milestone has been made in UK conservation, and it's happening right here in Kent. The nation's first-ever bison bridges have officially opened, giving Europe's largest land mammal more room to roam in West Blean and Thornden Woods – marking a bold new step for the pioneering Wilder Blean project.

Led by Kent Wildlife Trust and Wildwood Trust, Wilder Blean is rewriting the rulebook on conservation by letting nature take the reins. And at its heart is an unlikely star: the European bison. These gentle giants are sometimes called 'ecosystem engineers'; through their natural behaviours – stripping bark, trampling vegetation, creating deadwood habitats and dustbathing – they open up the forest floor for a wider range of flora and fauna to flourish, ultimately helping to restore dynamic, living landscapes bursting with biodiversity. Their presence has even been shown to support carbon sequestration, making them a powerful ally in the fight against climate change.

Introduced to the woodland in July 2022, the bison were initially given access to 50 hectares. With the opening of two newly constructed bridges, their roaming area has now doubled to 100 hectares. Once the final two crossings are complete, the only wild bison herd in the country will have access to a massive 200 hectares of ancient woodland. It's more space to roam, more forest to revive, and more magic for visitors to witness.

But these crossings aren't just for the bison. They have been cleverly designed to provide elevated footpaths, giving visitors a spectacular view across the reserve and a unique opportunity to observe the bison in their natural habitat.

The £1 million construction was made possible by a coalition of environmental supporters including The National Lottery Heritage Fund, National Highways' Environment and Wellbeing Designated Fund (as part of the Network for Nature programme), The Michael Uren Foundation, Veolia Environmental Trust, Garfield Weston Foundation, and private donors.



Visitors can stroll above while bison roam freely underneath.

However, the road to wilding hasn't been without its challenges. Under current UK law, European bison are still classified as "dangerous wild animals", meaning the herd must be securely contained by 43 kilometres of fencing. These new bridges provide a clever solution and the essential infrastructure to keep people safe, connect the bison to the wider landscape, and keep footpaths open.



**BISON
BRIDGES
NOW
OPEN**

"This is a landmark moment for the Wilder Blean Project which serves as a blueprint for other bison wilding efforts. These bridges show what can be achieved with the right support, even within restrictive frameworks."

Simon Bateman-Brown,
Head of Land Management
at Kent Wildlife Trust

The bridge openings represent a major leap forward in the development of the Blean 'Wildscape', an ambitious plan to connect fragmented habitats and reintroduce native species across the region. Supported by

Rewilding Britain's Challenge Fund, the initiative is uniting landowners, conservationists, and local communities in a shared mission to restore nature and fight the twin crises of biodiversity loss and climate change.

Wilder Blean is already becoming a beacon of hope – and proof that with bold ideas, dedicated people and a touch of bison brilliance, we can build a wilder future. With continued public and private backing, Wilder Blean could become a model for future wilding projects across the UK, one bridge, and one bison, at a time. 🐃



FIND OUT MORE

about the Wilder Blean project at
kwtdg.uk/wilder-blean



WITH THANKS TO OUR FUNDERS



Thanks to National Lottery players



**THE MICHAEL UREN
FOUNDATION**



Red-billed return

Thanks to your incredible support of our Chough Appeal, we're thrilled to announce that, with project partners Wildwood Trust, we've secured enough funding to continue releasing red-billed choughs in 2025.



Every donation and every show of support has helped us get there. You're helping to bring this ambitious reintroduction project closer to success, and we are deeply grateful for your commitment to restoring one of Britain's most iconic birds.

This is now a pivotal moment for the project. With two cohorts of choughs already flying free over Kent, our focus turns to bolstering the population through additional releases. Sightings of these charismatic corvids are on the rise, not just soaring over the White Cliffs of Dover, but more recently exploring along the coast of Ramsgate and Margate. These bold little birds are pushing boundaries, establishing a new territory in Dover and forming what we fondly call a “spin-off chough society” beyond their original release site. Excitingly, our nesting pair is showing promising signs of returning to their nest in Dover. Could we hear the pitter-patter of tiny chough feet this season?

Preparing for take-off

Behind the scenes, our partners at Wildwood Trust are already hard at work preparing the next group of birds for the 2025 release. These young birds will soon join and strengthen the existing group, bringing us closer to a self-sustaining flock.

This project proves what can be achieved when science, conservation, and community come together.

“The red-billed chough reintroduction project in Dover demonstrates that, even with the perilous state of nature in this country, it is still possible to restore wildlife and return lost species.”

“The project is rooted in strong science and decades of habitat restoration. We’ve laid the foundations for a successful re-establishment of a bird that has deep cultural roots in Kent.”

Paul Hadaway,
Director of Conservation
at Kent Wildlife Trust



Rooted in chalk grassland

The journey of the chough’s return is grounded in decades of chalk grassland restoration, a habitat once on the brink of disappearing. Chalk grassland, the chough’s preferred habitat, is often referred to as Britain’s rainforest. This rare habitat can support up to 40 plant species per square metre and countless invertebrates, just what a hungry chough needs.

For over 40 years, Kent Wildlife Trust has worked alongside landowners and partners to bring these habitats back. Organic conservation grazing has been key, not just for sustaining plant diversity, but also for creating the rich, dung-filled ecosystem that choughs depend on for their food.

And with chalk valleys stretching from Dover at the heart to the surrounding downland, feasibility studies have confirmed that we now have the critical mass of connected habitat needed to give choughs a real chance to thrive in the region.




Spotted a chough? Let us know!

We couldn’t have done this without your support, and we’re just getting started. If you’re lucky enough to spot a red-billed chough, with its glossy black plumage and fiery red legs and bill, please let us know. Photos and sightings help us track their movements and measure the impact of the project.



A new chapter in an ancient tale

The chough’s comeback is more than just conservation. It’s about reconnection – to the land, to our shared history, and to a future where wild places thrive. With your help, we’re turning a symbol of loss into one of revival. We’re looking forward to the moment, not far off, when red-billed choughs are once again a familiar sight along Kent’s cliffs. 

 **FIND OUT THE LATEST**
from the chough project at
kwttg.uk/chough-summer

Share your sightings

Please do share reports of sightings of choughs foraging and soaring over Dover Castle – it’s an image us conservationists have long envisioned!



Discover your



© LEWIS KING

Making waves

This new initiative aims to protect marine mammals along the Kent coast and we need your eyes on the water.

There's a new wave of marine conservation making a splash along the Kent coast, and you can be part of it. The Kent Dolphin Project, a collaborative effort between the Sussex Dolphin Project and Adonis Blue Environmental Consultants (part of the Kent Wildlife Trust Group), is working to better understand and protect whales, dolphins and porpoises (known collectively as cetaceans) in the county's waters. By combining research, conservation, and community power, the initiative aims to give Kent's marine life a voice, and a future.




© ROSS BOATS

Making sense of marine mammals in Kent

The main goal of this project is to identify the distribution and abundance of cetaceans in Kent, which can then be used to inform effective strategies to protect Kent's marine environment and its cetacean population. While Kent may not be the first place that comes to mind when you think of whales and dolphins, sightings are becoming increasingly common. Bottlenose dolphins have been seen navigating the River Medway and a humpback whale was even spotted off the coast of Deal. Past reports include pilot whales and minke whales cruising the coastline.

Building a baseline

The Kent Dolphin Project is currently conducting landwatch surveys to gather a baseline understanding of cetacean activity in the region. These surveys rely on volunteers who scan the sea from key coastal locations, helping to paint a clearer picture of marine mammal presence and behaviour. 



Join the effort

The Kent Dolphin Project is seeking to build a network of trained volunteers along the coastline to help us collect vital data. Whether you're a seasoned wildlife watcher or someone who loves a walk by the sea, you can help.

All you need to do is:

- 1) Sign up for our short online training course
- 2) Head out along the coast and start recording sightings
- 3) Submit your data



GET STARTED AT

kwtdg.uk/kent-dolphin-landwatch



Max Renton
Coastal and Marine Ecologist for Adonis Blue Environmental Consultants

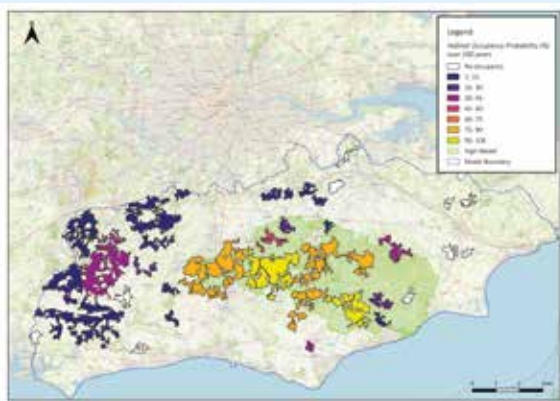
Max's work is primarily focussed around coastal and marine surveying and restoring important coastal habitats. Max also runs the Wildlife Trusts citizen science initiative Shoresearch, and is project lead for the Kent Dolphin Project, supporting Sussex Dolphin Project.

© THEA TAYLOR, DOLPHIN PROJECT

inner scientist

Returning Pine Martens

Once widespread across the country, pine martens have been missing from the South East for over a century. We hope that's going to change. In a collaboration between Kent Wildlife Trust, Wildwood Trust, Sussex Wildlife Trust, Ashdown Forest and Forestry England, the South East Pine Marten Restoration Project is assessing the potential for restoring these secretive tree-dwellers in our region. As part of this, Kent Wildlife Trust's Data and Modelling Officer Ella Lewis has been working to answer the critical question: is our landscape ready to welcome pine martens back?



Model results showing the average % likelihood that pine martens would occupy a woodland area across 100 years after being released into the High Weald.



Model results showing individual movement paths that could be taken by five pine martens in East Kent.

What is a connectivity model?

The project began with a habitat suitability model, identifying which habitats in the South East would allow pine martens to find enough food, cover and space to live. One place stood out: the High Weald National Landscape, with its extensive mosaic of woodland habitats. But finding habitat is just part of the story. The next step is to create a connectivity and population viability model. Through data and mapping tools, we can determine how connected the woodland habitats are and how easily pine martens could move across the landscape, forming a resilient, connected population over time.

What have we found?

The model suggests that the High Weald has not just enough habitat to support a viable population, but also, in the long-term, a potential springboard for natural expansion westward into areas like the Sussex South Downs National Park. The model highlighted key natural corridors, such as hedgerows, riverside woods, and narrow woodland strips as important for facilitating long-distance movement across the landscape. To determine whether road traffic may be an issue for pine martens, we are conducting a road mortality survey this year.

What happens now?

Now we know where pine martens could go, the project can start mapping their potential movement routes through the South East if reintroduced. If further ecological and social assessments confirm the feasibility of reintroduction, we can then prepare by identifying where we have strong wildlife corridors but also gaps where connectivity is lacking. This information will help us work with landowners and local communities to link habitats in the landscape, laying the groundwork for pine martens to successfully return.

Get involved

Welcoming pine martens back would be a landmark moment for wildlife in the South East, and we'll need a community of passionate people to make it happen.



SIGN UP TO THE PROJECT NEWSLETTER

and stay updated on how you can support surveys, community outreach and more at kwtg.uk/pine-martens



Ella Lewis

Nature Based Solutions and Evidence Officer

With a background in ecological modelling and GIS, Ella provides data support across various landscape projects including the South East Pine Marten Restoration project as well as Nature Based Solution opportunities through the Wilder Carbon scheme.

Show us your

WILD SIDES



Volunteer Spotlight



Volunteers

Sevenoaks Greensand Commons



Why Volunteer with Kent Wildlife Trust?

Volunteering is a powerful force for good - not just for the causes it supports, but also for the individuals who give their time. People choose to volunteer for many reasons: to help others, to improve their surroundings, to use and develop skills, to meet like-minded people, or to support a cause they deeply care about.

With so many charities and non-profits in need of volunteer support, why choose us? The answer lies in our mission and the diversity of opportunities we offer. Here, our goal is simple yet ambitious: to increase wildlife abundance and climate resilience across 30% of Kent's land and sea, and we need local people to help us.

This is not just about protecting rare species. It's about restoring the natural processes that keep our ecosystems thriving, from pollination to soil health to carbon sequestration. We believe that by working closely with communities and partners, we can restore balance to our environment and secure a sustainable future for all.

Finding a role for you

We believe that everyone has something valuable to offer, and that in return, volunteering can change your life in ways you never expected. We offer a broad range of roles to suit different lifestyles, skills, and interests. Volunteering with us doesn't mean heading out in steel-toe boots each week – unless that's your thing! Whether you want to:

- Restore habitats with a local conservation team
- Help run events or welcome visitors to our reserves
- Monitor wildlife and generate critical data
- Support campaigns, photography, education or digital content

... there's a place for you here.

We understand that people have different schedules and capabilities. That's why we offer flexible and seasonal volunteering opportunities, including roles that can be done from home. These opportunities allow people with busy lives or mobility limitations to make a meaningful impact.



Hedge laying
Marden

Learn, grow, and gain skills

One of the most rewarding aspects of volunteering with us is the chance to learn directly from our experienced and passionate conservationists. You'll gain practical skills in wildlife identification, habitat management, and ecological principles, especially valuable for those considering a career in conservation or environmental sciences.

You'll also get access to discounted study days and trainings, including nationally recognised qualifications, perfect for those looking to brush up their CV or just simply love learning for the joy of it.

Build community and connection

At its heart, volunteering is about connection, both to nature and to other people who care as much as you do. Whether you're working on a nature reserve, participating in a beach clean, or attending training sessions, you'll meet people from all walks of life who are united by a common goal: protecting our natural heritage. Many of our volunteers say the friendships and community spirit they've found through the Trust are among the most fulfilling aspects of their experience.

A boost for your wellbeing

Spending time outdoors, working with your hands, and connecting with nature has proven benefits for mental and physical health. In fact, many of our volunteers tell us they feel happier, less stressed and a stronger sense of purpose. Why not join them?

© BRYONY CHAPMAN



Shoresearch
Dumpton



Hedge planting

© T CONNOR



Garden volunteers



Volunteer Day
Garden volunteers Tyland Barn

Make a real difference

Every action you take as a volunteer supports vital conservation work. You're helping to protect species, restore habitats, and educate others about the importance of the natural world. At Kent Wildlife Trust, your contributions matter, and together, we can create lasting change for wildlife and people across the county.

So if you're looking to learn, connect, recharge, or make a difference, there's never been a better time to join us. Volunteering with us means joining a movement for nature – and you're warmly invited.



YOU CAN DISCOVER ALL OF OUR CURRENT AVAILABLE VOLUNTEERING OPPORTUNITIES AT
kwtg.uk/volunteer-summer

6 ways you and your family can reduce your carbon footprint this summer

1 Shop second-hand (and only when you really need to!)

Wherever possible, it's fantastic to say no to fast-fashion and instead buy second-hand. According to Oxfam, if all UK adults bought half of our wardrobe second-hand, it could prevent 12.5 billion kilograms of carbon dioxide from entering the atmosphere – equivalent to a plane flying around the world more than 17,000 times! It's amazing what you can find in your local charity shop, car-boot sale, or on second-hand platforms like Vinted and eBay. Think of it like a treasure hunt, and any pieces you find will mean so much more.



2 Ditch the car

We've said it before and we'll say it again – if you have an opportunity to walk, wheel, or take public transport instead of hopping in the car, it'll do wonders for the planet and your wellbeing. Not only will you reduce your carbon emissions, but you also won't have to sit in endless traffic, watching green lights turn red, as your heart rate steadily rises. Opting for a lovely view from the train window or taking a mindful walk to your destination isn't something you're likely to regret. Choosing to take a 'stay-cation' over an international flight is also something that the planet will thank you for, and it's a chance to discover some idyllic destinations right here at home.

3 Switch up what you eat

Changing what you eat can make a big difference in reducing your carbon footprint. According to the UN Food and Agriculture Organization, meat and dairy accounts for about 14.5% of global greenhouse gas emissions. Opting for a plant-based meal a few times a week will help to reduce that scary statistic.



When you're shopping for your veggies to make your tasty dish, it's also great to go local – check the label to see how far your greens have travelled! Can you find some that have been grown in the UK or nearby countries to reduce the carbon footprint of transporting them to you? Finally, the Intergovernmental Panel on Climate Change estimates that food waste makes up nearly 10% of total man-made greenhouse gases emitted, so plan your meals well to prevent this from going into our atmosphere!



4 Get involved with community action groups

Often, we find that there are already communities of people taking action to reduce environmental issues in your village, town or city, so make sure to see what's already happening in your area. It could be anything from litter picking, group meetings, or swift monitoring, to a community garden. Join in with the fun and help make real, tangible change whilst meeting lovely people with similar mindsets.



© TIM HORTON



5 Put pressure on those in power

Remember that whilst we do all need to keep taking individual action, a lot of responsibility over global issues like climate change falls on the shoulders of world leaders. If they commit to making changes globally by implementing policy and new legislation, it can make a huge difference. Why not write a letter as a family to your local MP, or the Prime Minister, asking them to make impactful change?

You can view our guidance on writing to your MP at [kwtg.uk/contact-mp](https://www.kwtg.uk/contact-mp)

6 Keep learning and spread the word!

The more open-minded we are to new, reliable, scientific information about climate change, the more resilient we will be as communities. If we continue to seek out knowledge and learn more about wildlife and the environment, we can go on to help others understand why it's important to look after our planet. And that's one of the biggest differences that we can make!



**Bella Sabin-Dawson,
Education Officer**

Bella creates resources and delivers education sessions at our nature reserves and across schools in Kent. With a background in environmental social sciences, she cares deeply about the relationship between people and nature, and how this can impact wildlife and the environment.



FEELING INSPIRED?

Check out even more actions for nature this summer at [kwtg.uk/action](https://www.kwtg.uk/action)



KENT UPDATE

© ROMAN WILLI



“Spidergate”: Challenging the PM over misleading claims

Leadng environmental groups have responded to a Telegraph editorial in which the Prime Minister Sir Keir Starmer suggested the halting of a 15,000-home scheme in Ebbsfleet due to the presence of a rare spider was “nonsense.”

In a joint letter co-signed by The Wildlife Trusts, Buglife, CPRE Kent and others, the organisations say this seriously misinterprets the facts.

Most of the development is still proceeding, with thousands of homes already built. 1,300 homes, out of the 15,000 total, were proposed within the Swanscombe Peninsula (which is designated as a SSSI) and therefore cannot be built.

The distinguished jumping spider, which has become the focus of media attention, was not found in the development area, but elsewhere within the SSSI, which supports over 1,700 invertebrate species and rare birds like the nightingale.

Evan Bowen-Jones, CEO of Kent Wildlife Trust, said: “This isn’t about blocking homes, it’s about building the right homes in the right places.”

The groups have invited the Prime Minister to visit Swanscombe and are urging the government to integrate environmental protection into sustainable development, rather than framing nature as an obstacle. 🌿



YOU CAN FIND OUT MORE

About our Save Swanscombe campaign at kwtg.uk/swanscombe-summer



Sheep take the lead in meadow restoration

© JESS ALLAM

A new partnership between Kent Wildlife Trust and Leybourne Grange Management CIC is enhancing biodiversity at a four-hectare meadow on the outskirts of West Malling using a carefully planned grazing programme as a natural management tool.

The Trust has replaced Dexter cows with sheep to implement a more targeted approach to grazing. The site will be closely monitored, and cows may return in the future to support the sheep if needed.

If you are a local resident, please do consider joining us as a volunteer Livestock Checker, helping to carry out daily animal welfare checks. Volunteers will receive full training and play an active role in supporting the grazing programme.

Alison Ruyter, who leads the Wilder Grazing Programme at Kent Wildlife Trust, said: "With the right care, this site can become a haven for wildlife. By involving the community and using nature-based management, we can enhance biodiversity while preserving the character of the landscape."

The Trust's Wilder Grazing Programme has been in development for decades and manages around 800 animals across 85 reserves. It uses traditional grazing animals to mimic natural processes, improving habitats and supporting nature's recovery in a changing climate. 🐏



LEARN MORE

about becoming a Livestock Checker at kwtdg.uk/livestock-checker

FIND OUT MORE

about Wilder Grazing at kwtdg.uk/wilder-grazing

It's not "nature or development". It's both.

New planning changes are set to weaken environmental protections for developments, like housebuilding. At the moment, developers need to assess and address the environmental impacts of developments on legally protected habitats and wildlife.

Part Three of the Planning and Infrastructure Bill would change this process. It would remove the foundations of our nature laws, such as the need to avoid harm to nature first. Environmental organisations, and even the Office for Environmental Protection –

the independent watchdog on environmental issues – agree that the Bill weakens the protection of nature.

We're demanding Ministers scrap Part Three of the Bill. And you can help! We've made it easy for you to email your MP through our action tool below, and we'll copy in the Chancellor to every email. We want the Treasury to know that MPs are getting involved, and we want the Chancellor to hear from you too. 🐏



FIND OUT MORE

and email your MP at kwtdg.uk/bill

KENT UPDATE

Sevenoaks Visitor Centre update



Work is well underway on the Sevenoaks Visitor Centre refurbishment. Due for completion in early Autumn 2025, this £2.1m project will see some much-needed improvements to the Visitor Centre, car parking area and the wider reserve.

The installation of full-height glazed doors and a deck area overlooking the often-missed West Lake will connect the visitor centre to the reserve like never before. The improved café space will provide an upgraded food offering and a space that's available for corporate hires and community events. Add to that the improvements in accessible features, interactive interpretation and a bespoke play park, Sevenoaks will be a wonderful new gateway to inspiring young and old alike.

Unfortunately, these improvements don't come without some disruption to access. At the time of writing, the car park is locked and only available to those attending pre-booked events. We ask that visitors still wanting to come and enjoy the reserve and planning on parking in residential streets nearby, do so with consideration for our neighbours and local community. 🐏



TO STAY UP TO DATE,

please visit our website at kwtdg.uk/sevenoaks-vc

Nature's next chapter

Transforming Sevenoaks Visitor Centre and Wildlife Reserve



With work underway at our flagship Sevenoaks reserve, we're inviting individuals and organisations to align themselves with the next chapter for this historic wild space. We're seeking sponsorship, and we'd be delighted to hear from you.

Scheduled for completion in Autumn 2025, this investment will connect more people with nature than ever before. Be part of the project that's increasing modern accessible space for everyone, with uninterrupted views across a magical lake teeming with wildlife.

Want to be of nature's next chapter?

Contact Talia at fundraising@kentwildlife.org.uk to discuss how to get involved and the exciting naming opportunities that are available.



**Interested in
supporting the project?**
JOIN US AS A SPONSOR

kwtg.uk/sevenoaks-vc



Registered with
**FUNDRAISING
REGULATOR**